



GAT MONTHLY MEMBERSHIP PROGRESS REPORT

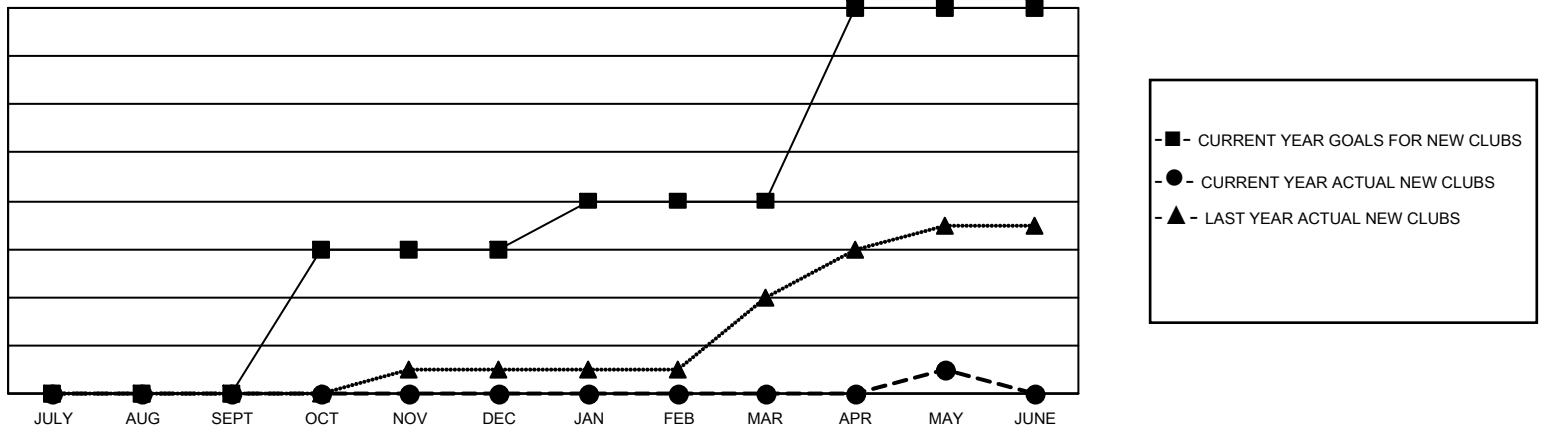
Results as of: 5/31/2022

Multiple District 11

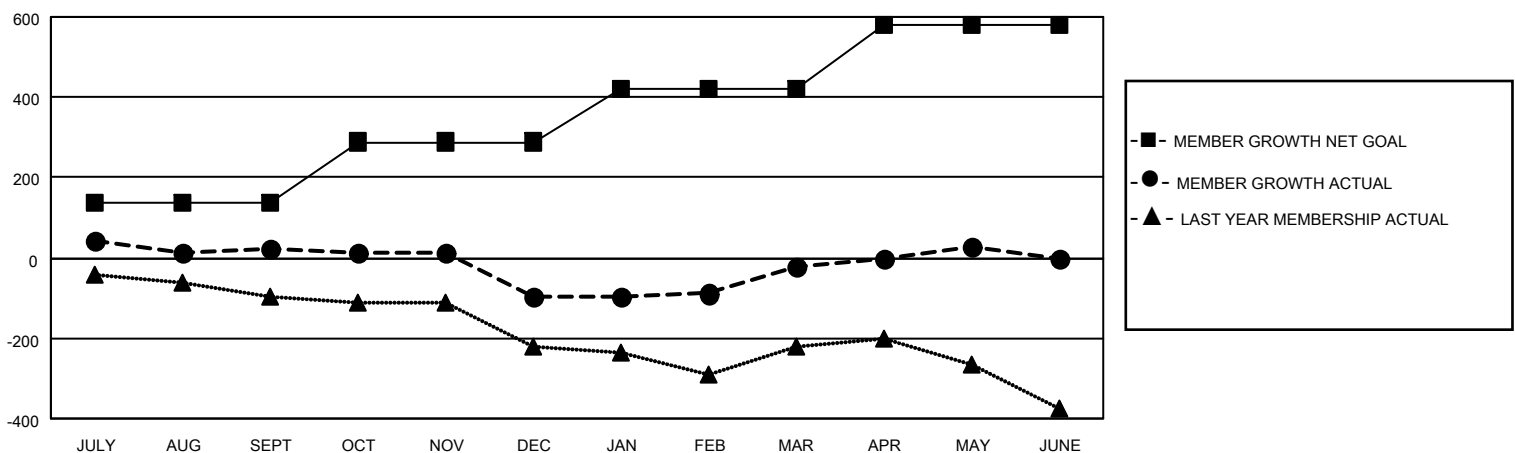
LOCATION: MICHIGAN

Clubs				Members			
RESULTS FOR 2021-2022				RESULTS FOR 2021-2022			
QUARTER	NEW CLUB GOAL	NEW CLUBS	DROPPED CLUBS	QUARTER	MEMBER GROWTH NET GOAL	MEMBER GROWTH ACTUAL	DROPPED MEMBERS ACTUAL (including transfers)
JULY/AUG/SEPT	0	0	2	JULY/AUG/SEPT	137	353	250
OCT/NOV/DEC	6	0	3	OCT/NOV/DEC	152	277	354
JAN/FEB/MAR	2	0	2	JAN/FEB/MAR	132	296	198
APR/MAY/JUNE	8	1	0	APR/MAY/JUNE	158	259	197

GOALS AND ACTUAL NEW CLUBS CUMULATIVE



GOALS AND ACTUAL MEMBERS CUMULATIVE



DROPPED CLUBS: 7

224 CLUBS OF 373 ADDED 1 OR MORE NEW MEMBERS

GENDER DISTRIBUTION

MALE	6,292 (65.26%)
FEMALE	3,348 (34.72%)
NON BINARY	0 (0.00%)
PREFER NOT TO ANSWER	2 (0.02%)

DROPPED MEMBERS

DECEASED	213
CLUB CANCELLED	32
OTHER	754
TOTAL	999

[CLICK HERE FOR CUMULATIVE MEMBERSHIP DATA](#)

TOTAL FAMILY UNIT MEMBERS	1,968
FAMILY MEMBERS PAYING HALF DUES	1,008